

SERVICE & REPAIR

Please call GRS® or an authorized GRS® dealer to order replacement parts and for instructions on replacement. Do not attempt to service parts that must be sent to GRS® or an authorized GRS® dealer; these must be repaired or replaced by GRS® or an authorized GRS® dealer. Servicing parts not signified as operator serviceable will void the 2-year warranty. **Any part not noted as replaceable or serviceable by the operator must be sent in to GRS® or an authorized GRS® dealer for repair.**

ORDER REPAIR OR REPLACEMENT PARTS

These parts are replaceable by the operator. Normal Wear and Tear, Abuse, Misuse, or Loss are not covered by warranty. See illustrations on page 15.

Tubing, PU CLR 0.250" O.D., 0.170" I.D (Foot Throttle Hose)	004-050
Fitting, PTC 0.25" 90° M1/8" NPT.	022-230
Fitting, PTC 0.25" Inline M1/8" NPT	022-231
Assembly, 5-Micron Filter and Bowl	022-944
RHMS, M4 x 0.7MM [Qty: 2]	022-978
Bracket, Filter Mount.	044-051
Tubing, PU CLR 0.250" O.D., 0.130" I.D.	044-229
Allen Wrench, 1/8"	022-053
Fitting, B-1/4" I.D. TUBE M1/8" NPT	002-361
Power adapter	022-872, 022-987, 022-993
Foot Throttle (Hose 004-050 not included)	004-519

OPERATOR SERVICEABLE PARTS

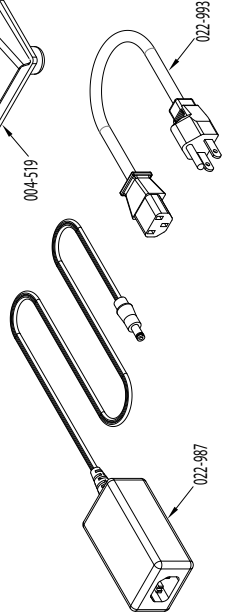
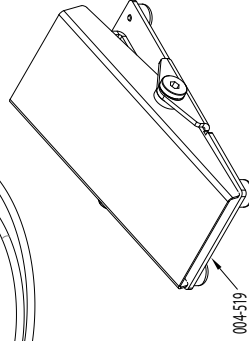
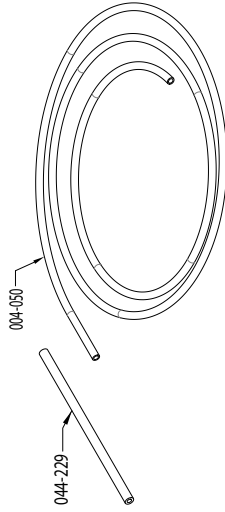
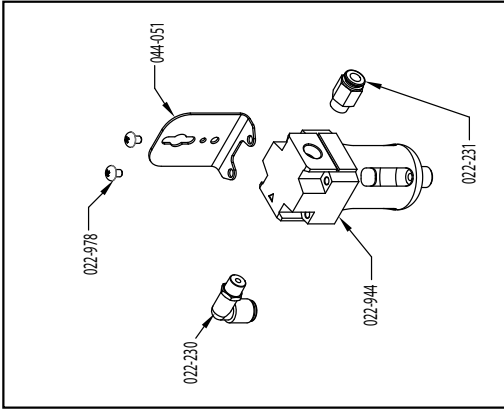
Call GRS® or an authorized GRS® dealer for instructions and ordering information before attempting to service or replace these parts.

GraverSmith® Box Parts	page 16
Motor Assembly (not Motor Valve Assembly)	page 20

GraverSmith® Accessories

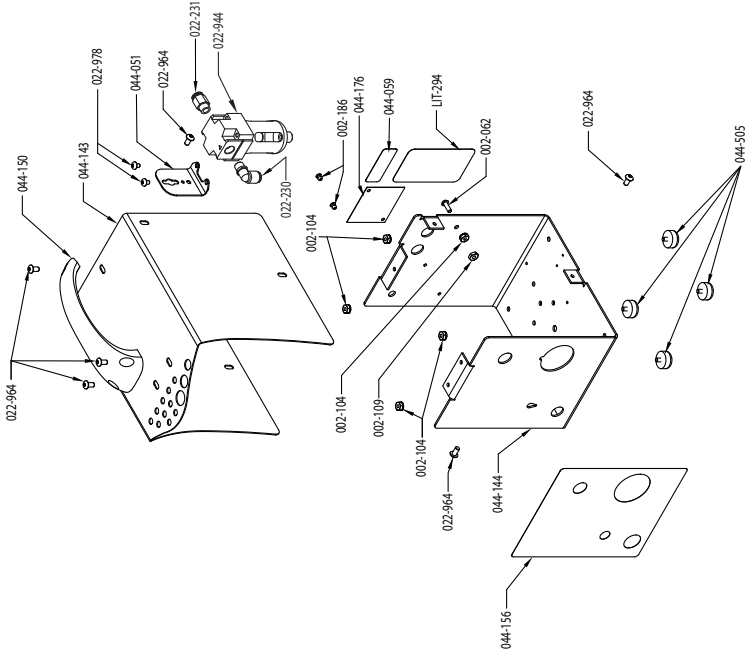
Order Replacements:

- 022-860 1 BOWL & COVER REPLACEMENT
- 022-861 1 FILTER REPLACEMENT



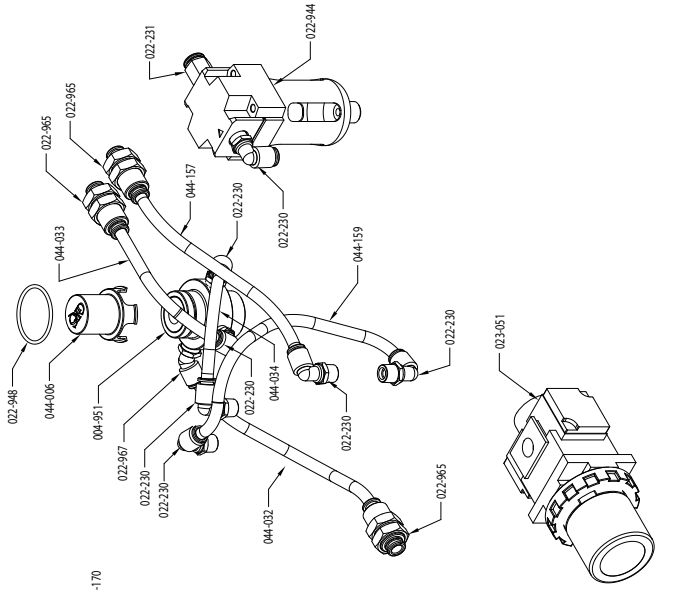
GraverSmith® Box Parts List

PART NO.	QTY.	DESCRIPTION
002-062	1	RHMS, #8-32 x 0.5" Z/P
002-104	5	NUT #8-32 HEXKEP Z/P
002-109	1	NUT, #10-32 HEX Z/P
002-186	2	POP RIVET
022-230	1	90° PUSH TO CONNECT FITTING
022-231	1	PUSH-IN MALE CONNECTOR
022-944	1	5-MICRON FILTER & BOWL
022-964	6	BHSCS, #10-32 x 0.38" BLK
022-978	2	4M X 0.7 METRIC SCREW PHILLIPS HEAD
044-051	1	FILTER MOUNT
044-059	1	DECAL TO IDENTIFY AIR INLET PORT & EXHAUST PORT
044-143	1	COVER PANEL FOR GraverSmith®
044-144	1	FORMED BASE FOR GraverSmith®
044-150	1	MOLDED HANDLE
044-156	1	GraverSmith® FRONT DECAL
044-176	1	24V ELECTRICAL LABEL
044-505	4	RUBBER FOOT AND SCREW ASSEMBLY
LIT-294	1	OIL CONTAMINATION NOTICE



Contact GRs® or an authorized GRs® dealer for replacement parts or repairs. Visit grs.com/dealers for dealers in your country.

GraverSmith® Pneumatic Parts List



PART NO.	QTY.	DESCRIPTION
002-536	3	NUT, 1/4"-20 FLNG LOCK ZIP
004-951	1	VALVE BODY, ROTARY
022-230	7	90° PUSH TO CONNECT FITTING
022-231	1	PUSH-IN MALE CONNECTOR
022-944	1	5-MICRON FILTER & BOWL
022-948	1	O-RING, 1.078" O.D. 0.938" I.D.
022-965	3	FITTING, PTC 0.25" BULKHEAD
022-967	1	FITTING, PTC .25" 45 DEG M 1/8 NPT
023-051	1	ARG REGULATOR GAUGE IN KNOB
024-168	3	SPECIAL WASHER
024-169	1	O-RING
024-170	3	SOCKET HEAD CAP SCREW
044-006	1	VALVE SHROUD, ROTARY
044-032	1	VALVE TO FRONT PANEL BULKHEAD
044-033	1	VALVE TO EXHAUST OUT
044-034	1	TANK TO VALVE
044-157	1	SUPPLY TUBE FROM AIR LINE IN TO REGULATOR
044-159	1	TUBE FROM REGULATOR OUT TO TANK
044-255	1	MOLDED AIR RESERVOIR TANK

Contact GRS® or an authorized GRS® dealer for replacement parts or repairs.
 Visit grs.com/dealers for dealers in your country.

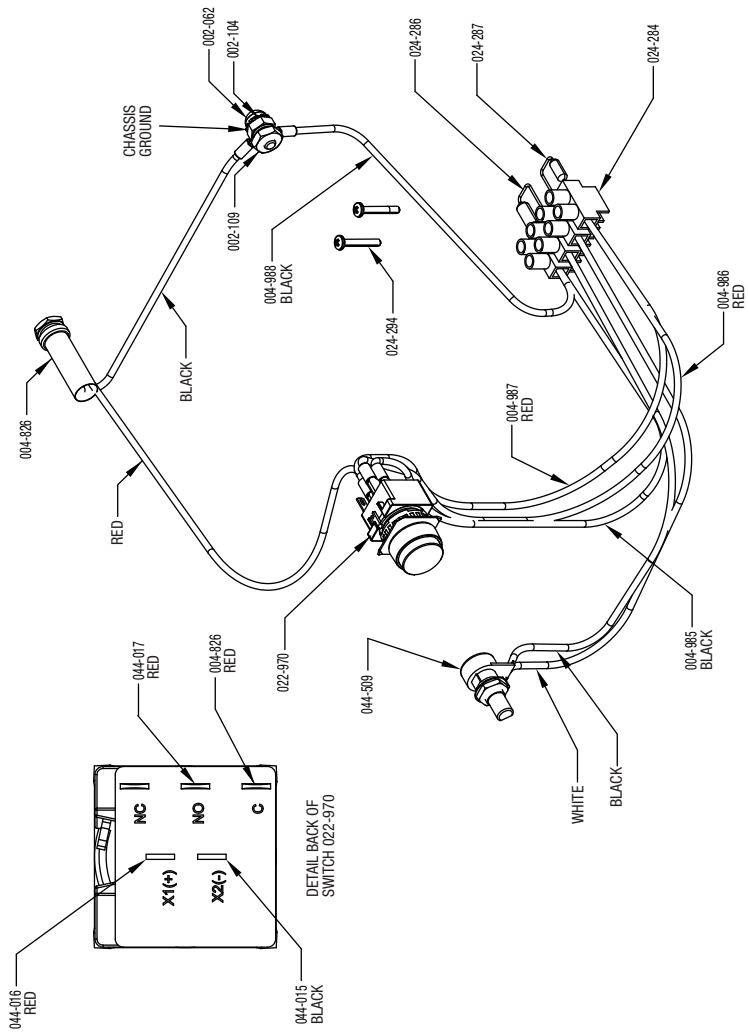
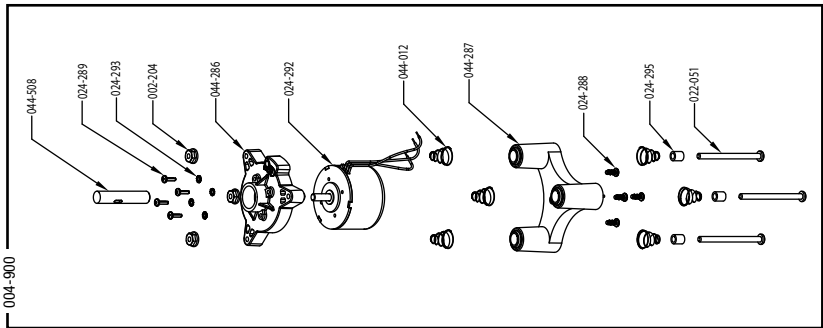
GraverSmith® Electrical Parts List

PART NO.	QTY.	DESCRIPTION	PART NO.	QTY.	DESCRIPTION
002-062	1	RHMS, #8-32 X .50" Z/P	024-287	1	RESISTOR 30.9K OHM 2W
002-104	1	NUT #8-32 HEXKEP Z/P	024-288	4	#8 X 3/8 HI/LO SCREW FOR BRITTLE PLASTICS
002-109	1	NUT, #10-32 HEX Z/P	024-289	4	M3 X 10MM (.5MM PITCH) PAN HEAD MACHINE SCREW
002-204	3	NUT, #10-32 HEX WHIZ LOC Z/P			
004-826	1	POWER JACK ASSY FOR GraverSmith®	024-292	1	BRUSHLESS DC 24VOLT MOTOR
004-985	1	SWITCH LED - TO TERMINAL BLOCK GROUND AND MOTOR BLUE	024-293	4	M3 18-8 STAINLESS STEEL EXTERNAL TOOTH LOCK WASHER
004-986	1	FROM SWITCH LED + TO TERMINAL BLOCK 24 VDC	024-295	3	NYLON SPACER
004-987	1	FROM SWITCH "NO" TO TERMINAL BLOCK 24 VDC	044-012	6	TAPERED SPRING FOR USE IN BLDC MOTOR MOUNT
004-988	1	CHASSIS GROUND TO TERMINAL BLOCK AND MOTOR BLUE	044-286	1	BLDC MOTOR MOUNT UPPER HALF
022-051	3	10-32 X 2.5 RHMS PHILLIPS DRIVE Z/P	044-287	1	BLDC MOTOR MOUNT LOWER HALF
022-970	1	PUSH BUTTON SWITCH ILLUMINATED	044-508	1	VALVE ROTOR ASSY
024-284	1	MOLEX 4 CIRCUIT TERMINAL BLOCK	044-509	1	POTENTIOMETER WIRE ASSEMBLY FOR BLDC MOTOR
024-286	1	RESISTOR 350 OHM 3W 1% TOL (OHMITE 64K8944)	024-294	2	M2.5 X 16MM SCREW

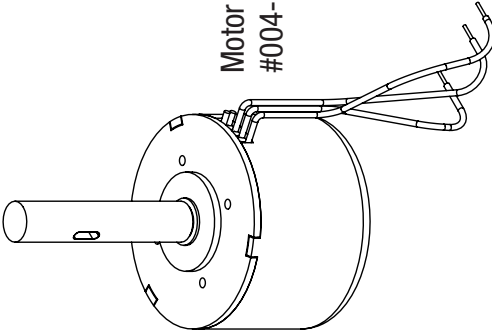
Contact GRS® or an authorized GRS® dealer for replacement parts or repairs.

Visit grs.com/dealers for dealers in your country.

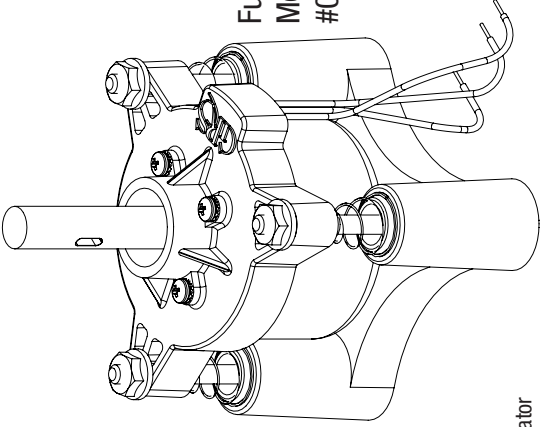
004-900



GraverSmith® Motor Assembly



Motor with Rotor only
#004-899



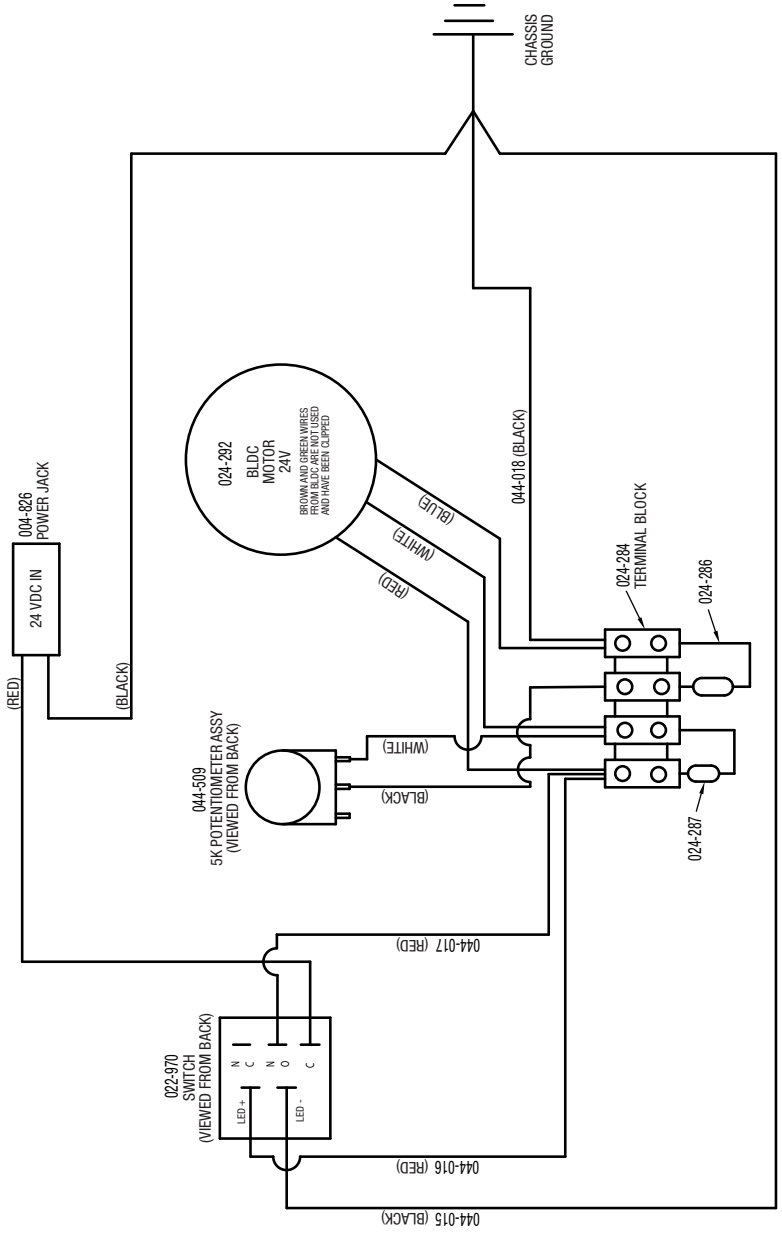
Full Motor and Motor
Mount Assembly
#004-900

Motor Assembly

The Motor Assembly is operator replaceable. Contact GRS® or an authorized GRS® dealer for options.

Contact GRS® or an authorized GRS® dealer for replacement parts or repairs.
Visit grs.com/dealers for dealers in your country

GraverSmith® Wiring Diagram



GraverSmith® Hose Diagram

